

N.E. 1/4

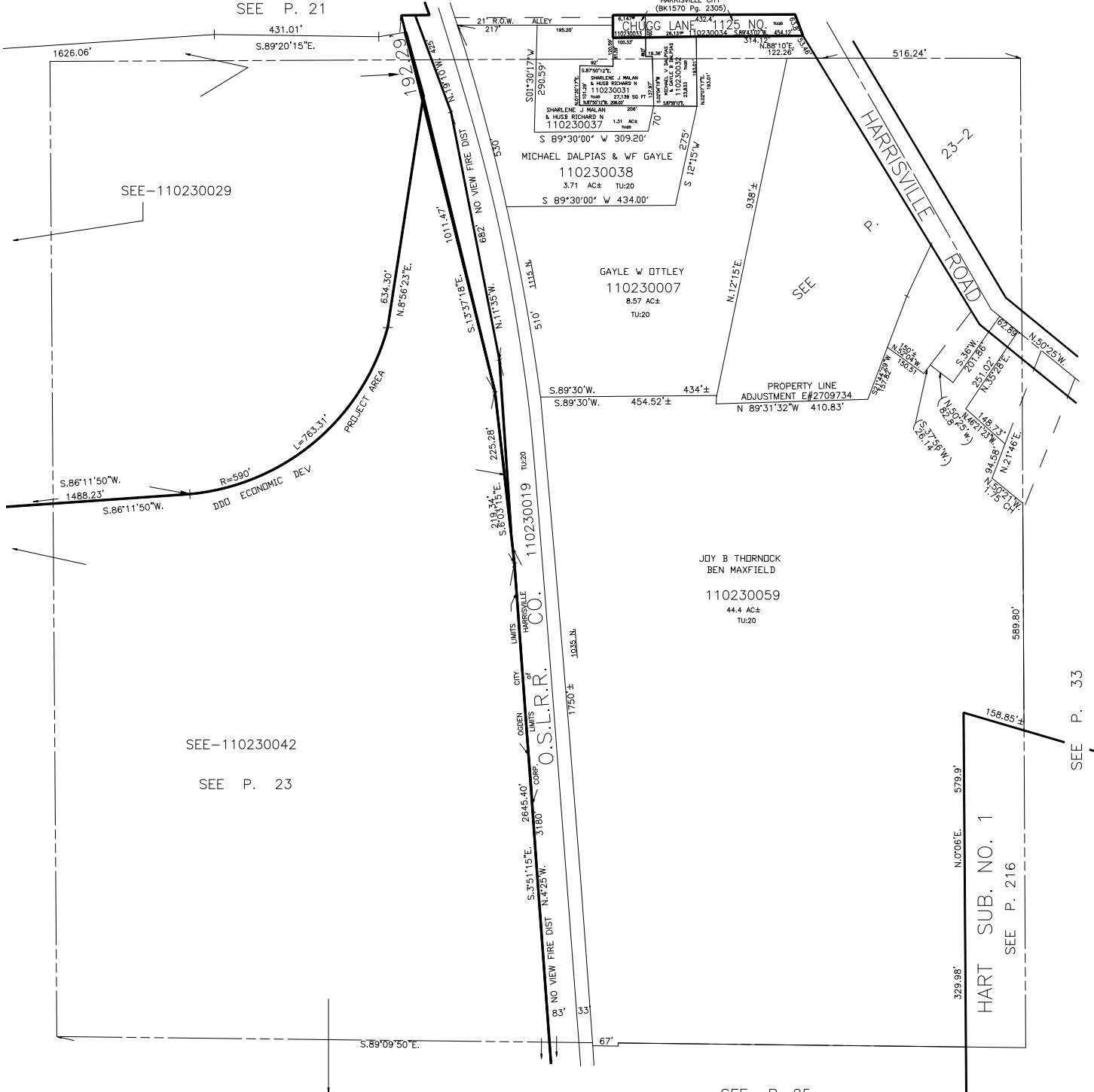
SECTION 7, T.6N., R.1.W., S.L.B. & M.

TAXING UNITS: 20, 22, 358

IN TOWN OF HARRISVILLE & OGDEN CITY

SCALE 1" = 200'

SEE P. 21



SEE-110230029

SEE-110230042

SEE P. 23

SEE P. 25

SEE P. 33